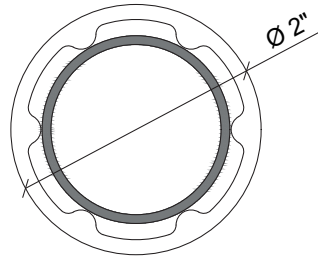
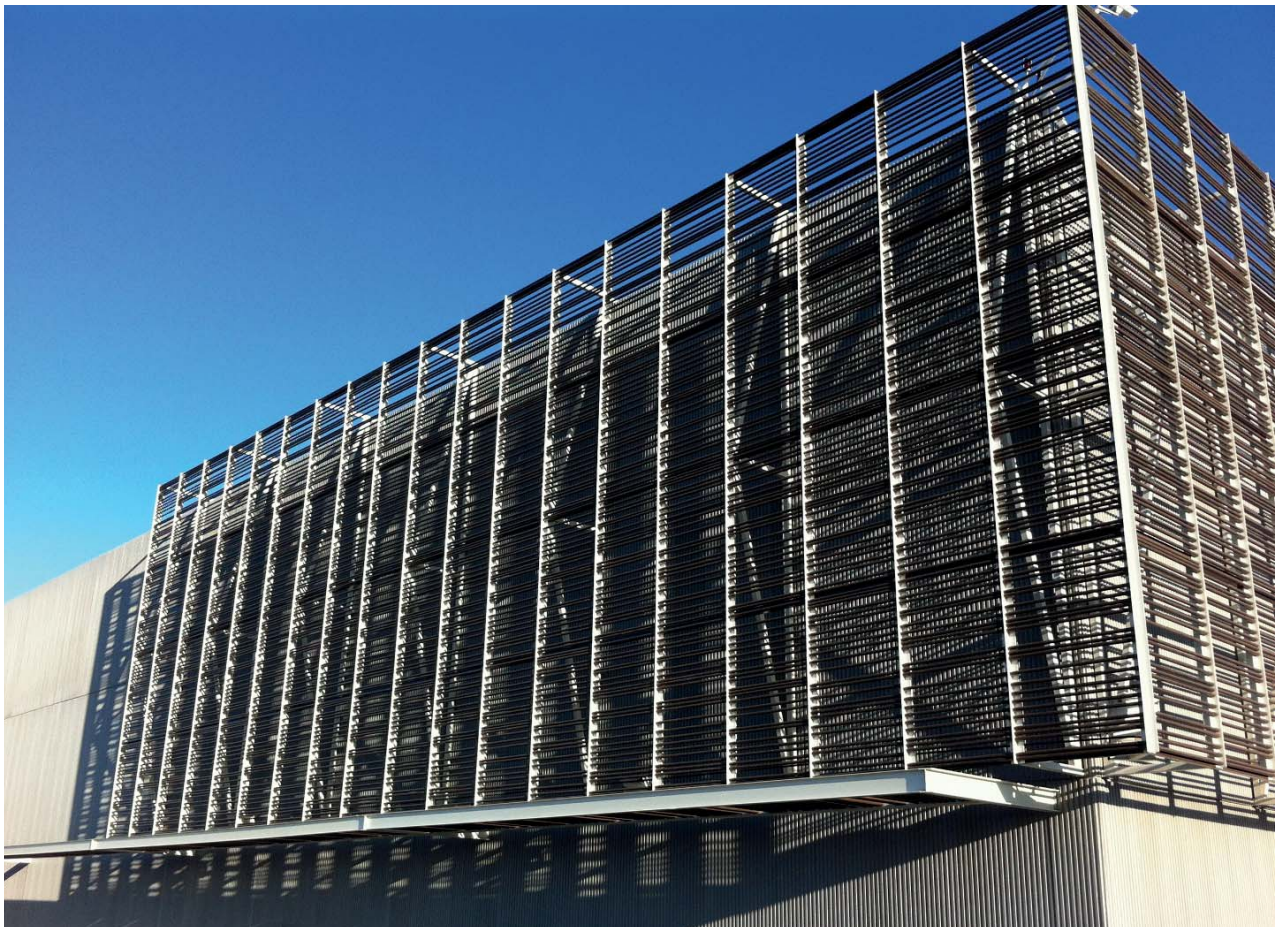


# C50R



Woodn recommends to refer only to the values expressed in mm - the US values are to be considered approximate).



| profile code | reinforcement dimensions<br>[ft, in]   | side<br>[ft, in] | maximum horizontal span<br>[inch] |       | maximum vertical span<br>[inch] |       |
|--------------|--|------------------|-----------------------------------|-------|---------------------------------|-------|
|              |  |                  | aluminum                          | steel | aluminum                        | steel |
| <b>C50R</b>  | $\varnothing 38 \times 1,5 \text{ mm}$<br>( $\approx \varnothing 1\frac{1}{2} \times 1/16''$ ) | $\approx 2''$    | $\approx 82''$                    | -     | $\approx 114''$                 | -     |

Maximum spans calculated considering:

- maximum permanent deformation due to own weight 1/8"
- maximum non-permanent deformation 1" 3/16 considering a standard wind load of 30.73 pound/ft<sup>2</sup>