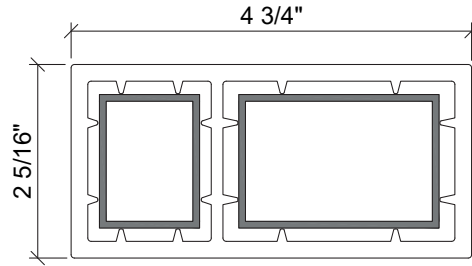
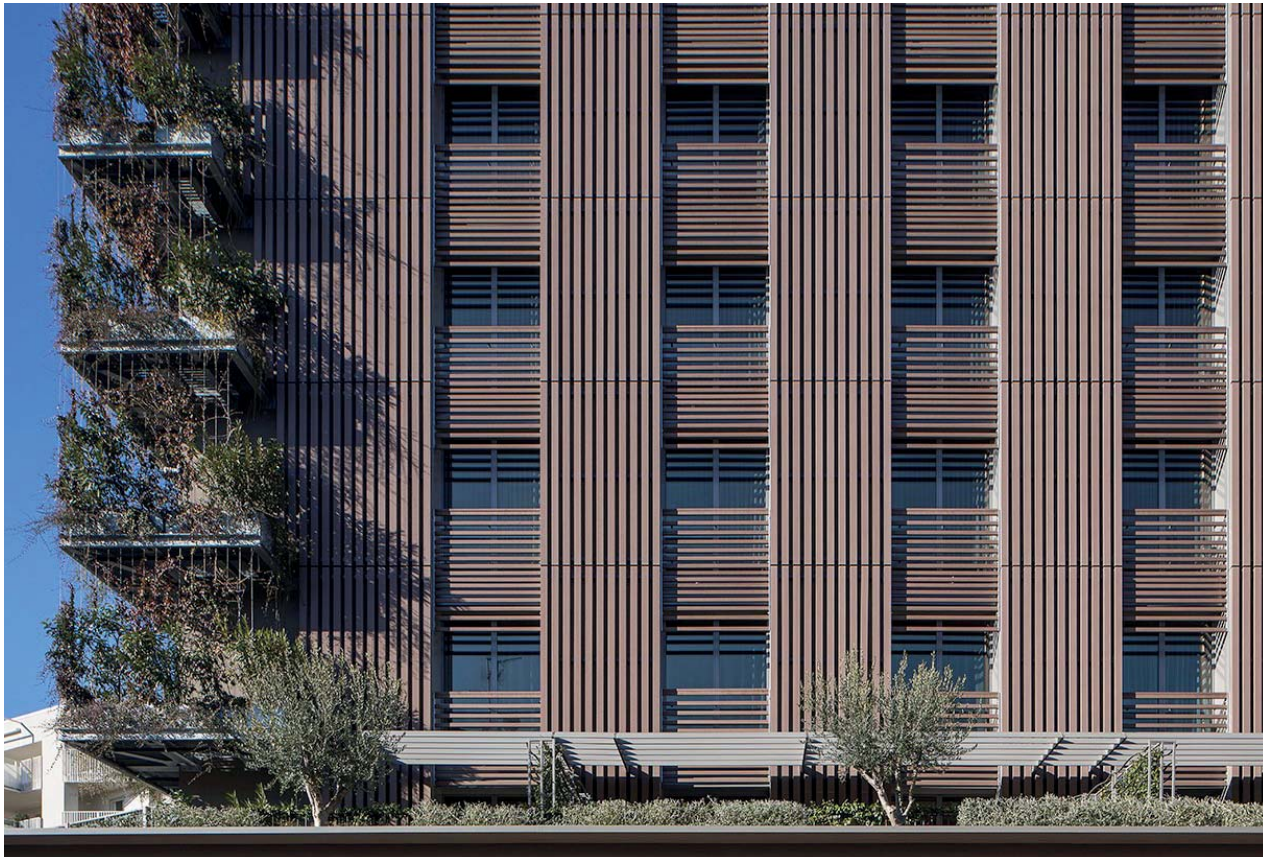


JF12058-A



Woodn recommends to refer only to the values expressed in mm - the US values are to be considered approximate).



profile code	reinforcement dimensions [ft, in]	side [ft, in]	maximum horizontal span [inch]		maximum vertical span [inch]	
			aluminum	steel	aluminum	steel
JF12058-A	30 x 40 x 2 mm (≈ 1"3/16 x 1"5/8 x 5/64")	≈ 4"3/4	≈ 75"	≈ 98"	≈ 106"	≈ 138"
		≈ 2"5/16	≈ 82"	≈ 110"		
	60 x 40 x 2 mm (≈ 2"3/8 x 1"5/8 x 5/64")	≈ 4"3/4	≈ 110"	≈ 145"	≈ 122"	≈ 157"
		≈ 2"5/16	≈ 94"	≈ 126"		

Maximum spans calculated considering:

- maximum permanent deformation due to own weight 1/8"
- maximum non-permanent deformation 1" 3/16 considering a standard wind load of 30.73 pound/ft²