

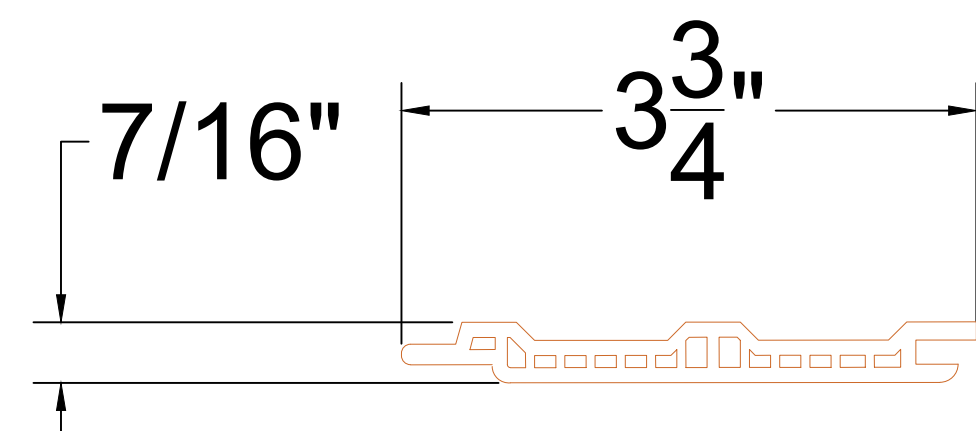


Cladding Project Texas

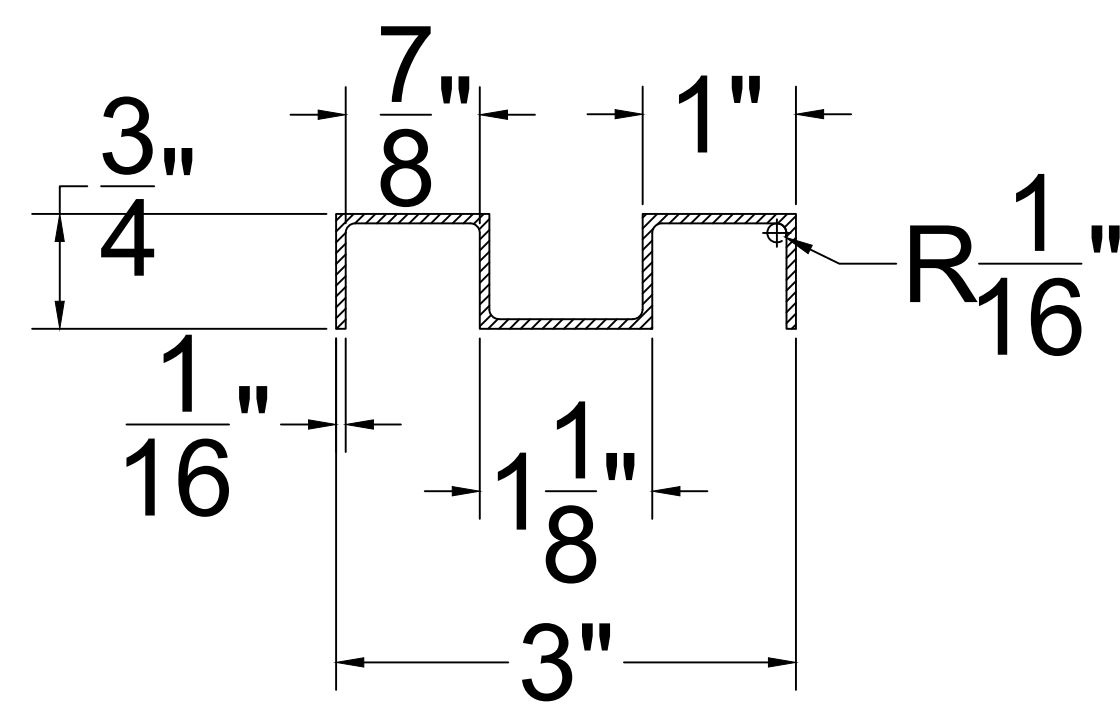
Shop Drawings Rev. 03
Formative Linear Systems
14310 SW 8 Street #1387
Miami, FL 33184
Tel. 786.264.1044
www.buildfls.com

BILL OF MATERIALS:

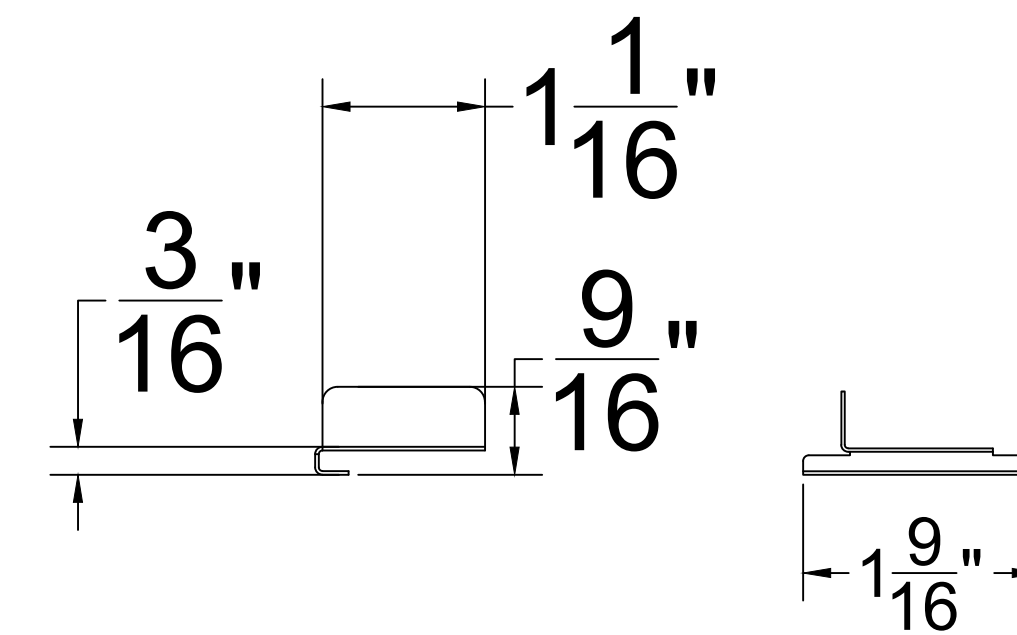
COMPONENT #	DESCRIPTION	DIMENSION	MATERIAL	SUPPLIER	NOTES
①	WOODN Q9510HD	3 3/4" X 7/16" X 6'	WOODN	FLS (WOODN IND. s.r.l.)	CLIPPED TO ②
②	ALUM. DOUBLE HAT CHANNEL	SEE COMPONENTS	6060-T6 ALUMINUM	FLS (WOODN IND. s.r.l.)	SUPPORT FOR ①
③	FIXING CLIP-ZCLW-KK2826-1	SEE COMPONENTS	AISI 304 STAINLESS STEEL	FLS (WOODN IND. s.r.l.)	SUPPORT FOR ① & CLIPPED TO ②
④	WOODN CORNER JFC3535	1 3/8" X 1 3/8" X 6'	WOODN	FLS (WOODN IND. s.r.l.)	WOODN CORNER FOR ① AS NEEDED
⑤	SELF DRILLING SCREW	SEE COMPONENTS	AISI 304 STAINLESS STEEL	FLS (WOODN IND. s.r.l.)	SCREW FOR FIXING ⑧ TO ④
⑥	SELF DRILLING SCREW	SEE COMPONENTS	AISI 304 STAINLESS STEEL	BY OTHERS	SCREW FOR FIXING ② TO STRUCTURE
⑦	DOWEL PIN	SEE COMPONENTS	WOODN	FLS (WOODN IND. s.r.l.)	CLIPPED TO ①
⑧	FIXING BRACKET ZCLW-WAJFC3535_6050	SEE COMPONENTS	ALUMINUM	FLS (WOODN IND. s.r.l.)	FIXING BRACKET FOR ④



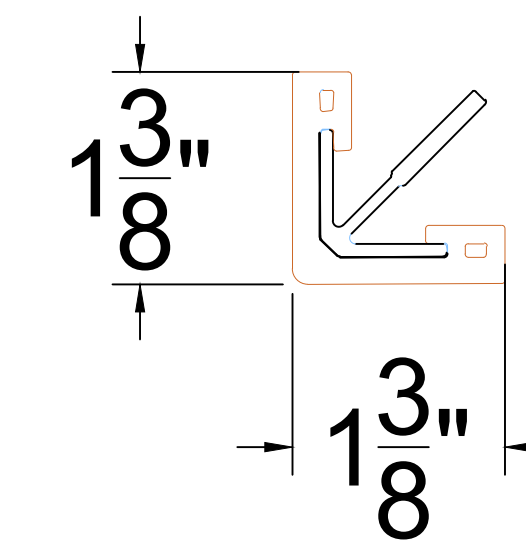
① Q9510HD PROFILE



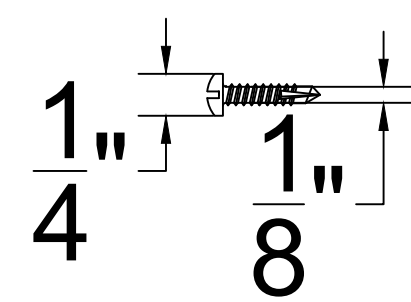
② ALUM. DOUBLE HAT CHANNEL



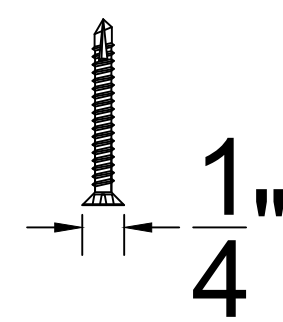
③ FIXING CLIP



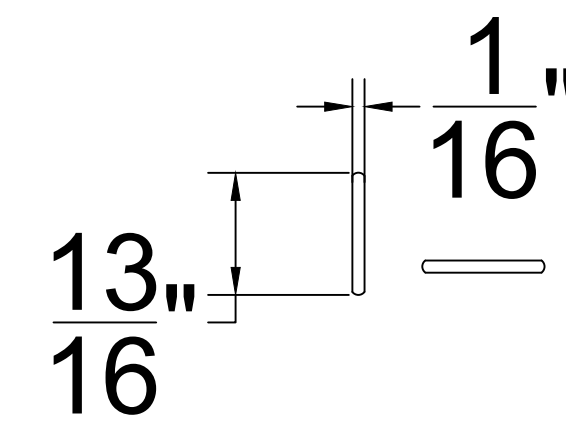
④ CORNER JFC3535



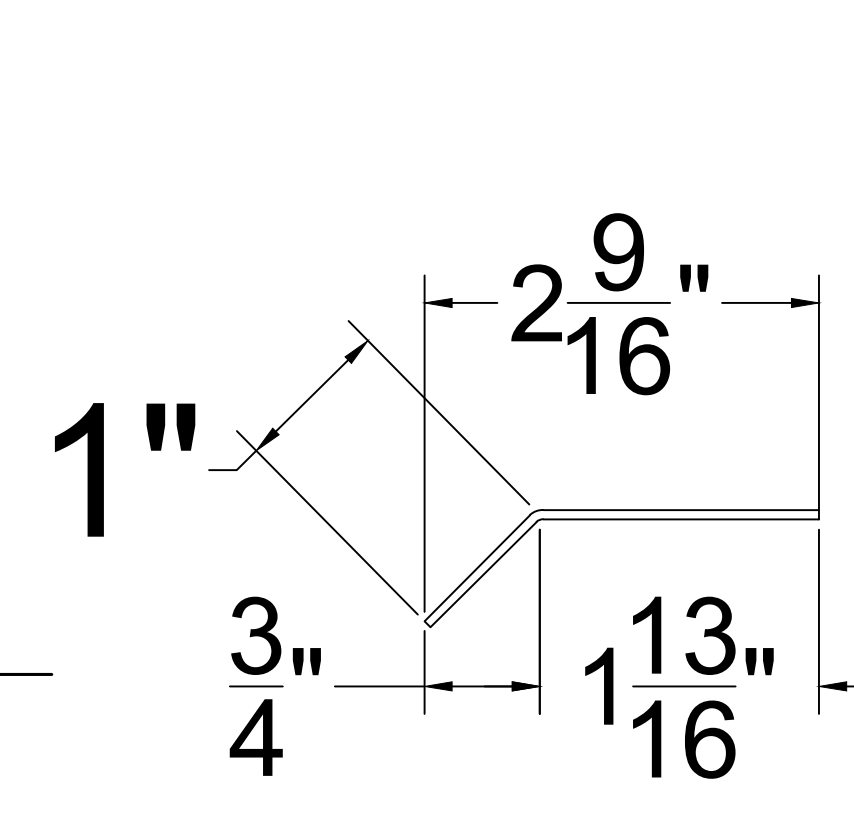
⑤ SELF DRILLING SCREW



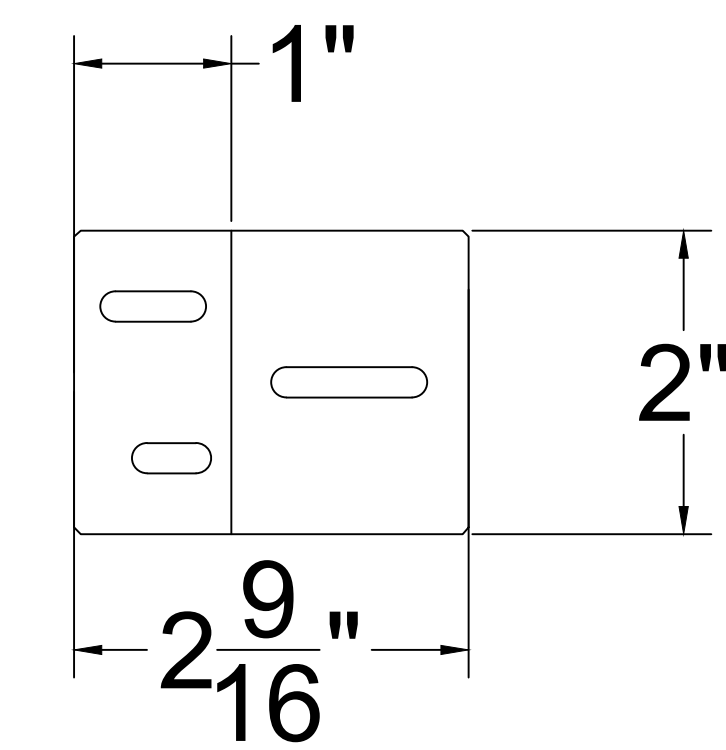
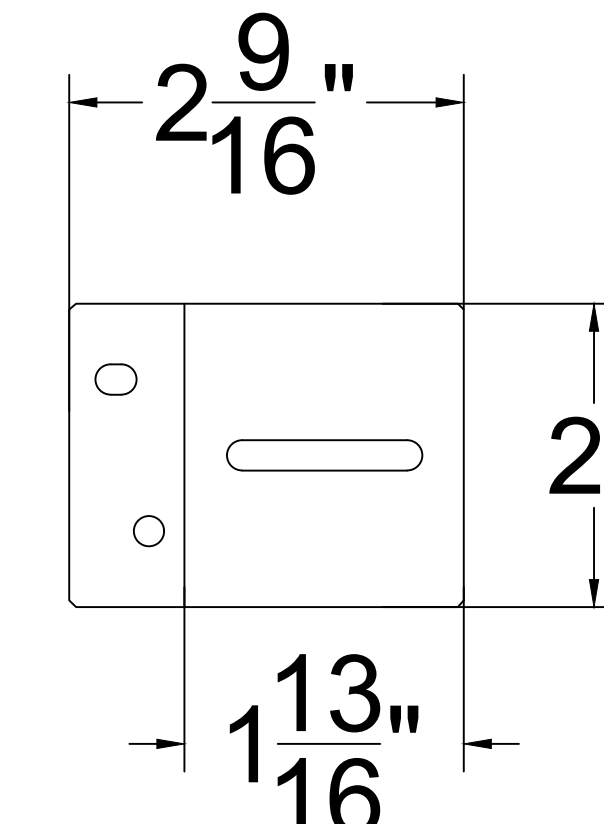
⑥ SELF DRILLING SCREW



⑦ DOWEL PIN



⑧ FIXING BRACKET



Formative Linear Systems
14310 SW 8 Street #1387
Miami, FL 33184
Office: 786.264.1044
www.buildfls.com

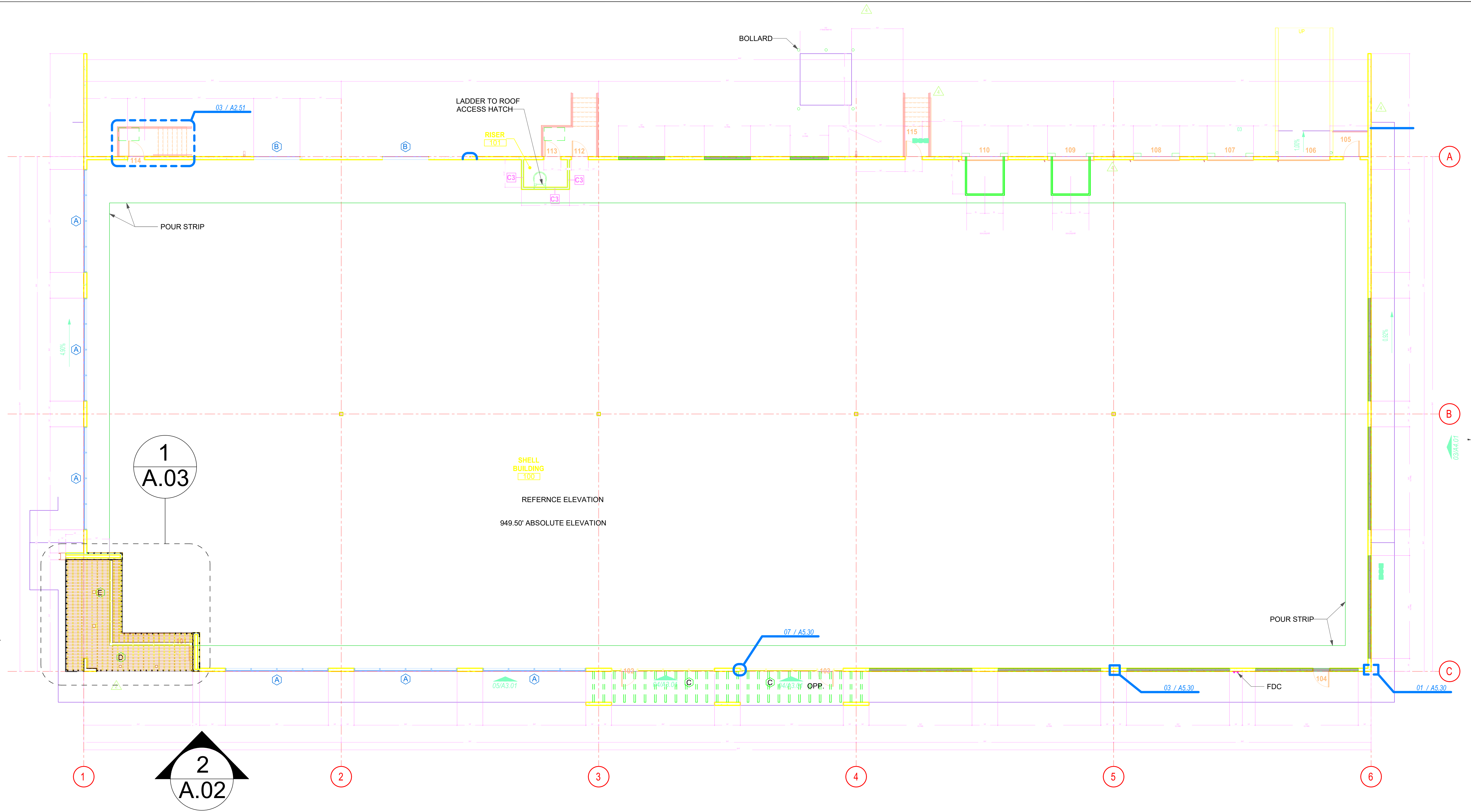
Cladding Project
Texas

Date:	Revision No:
04/14/2021	00
04/15/2021	01
04/16/2021	02
05/19/2021	03

Description:

Prepared By: GA

AS SHOWN A.00
SCALE SHEET 00



A.01 - PLAN VIEW (PLAN A2.01) - BUILDING D

Scale: 1/8" = 1' 0"



Formative Linear Systems
 14310 SW 8 Street #1387
 Miami, FL 33184
 Office: 786.264.1044
 www.buildfls.com

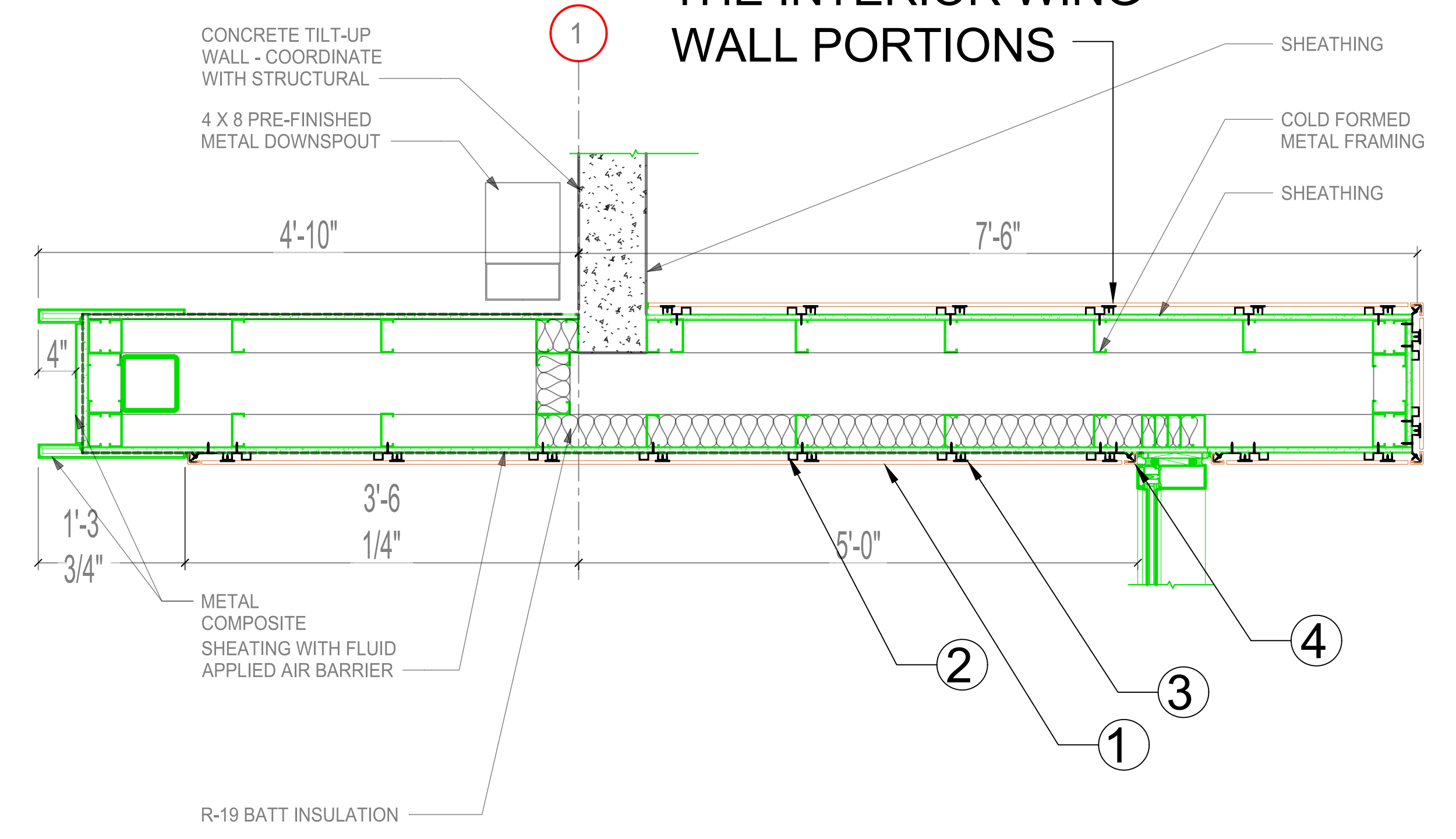
**Cladding Project
 Texas**

Date:	Revision No:	Description:
04/14/2021	00	
04/15/2021	01	
04/16/2021	02	
05/19/2021	03	

Prepared By: GA

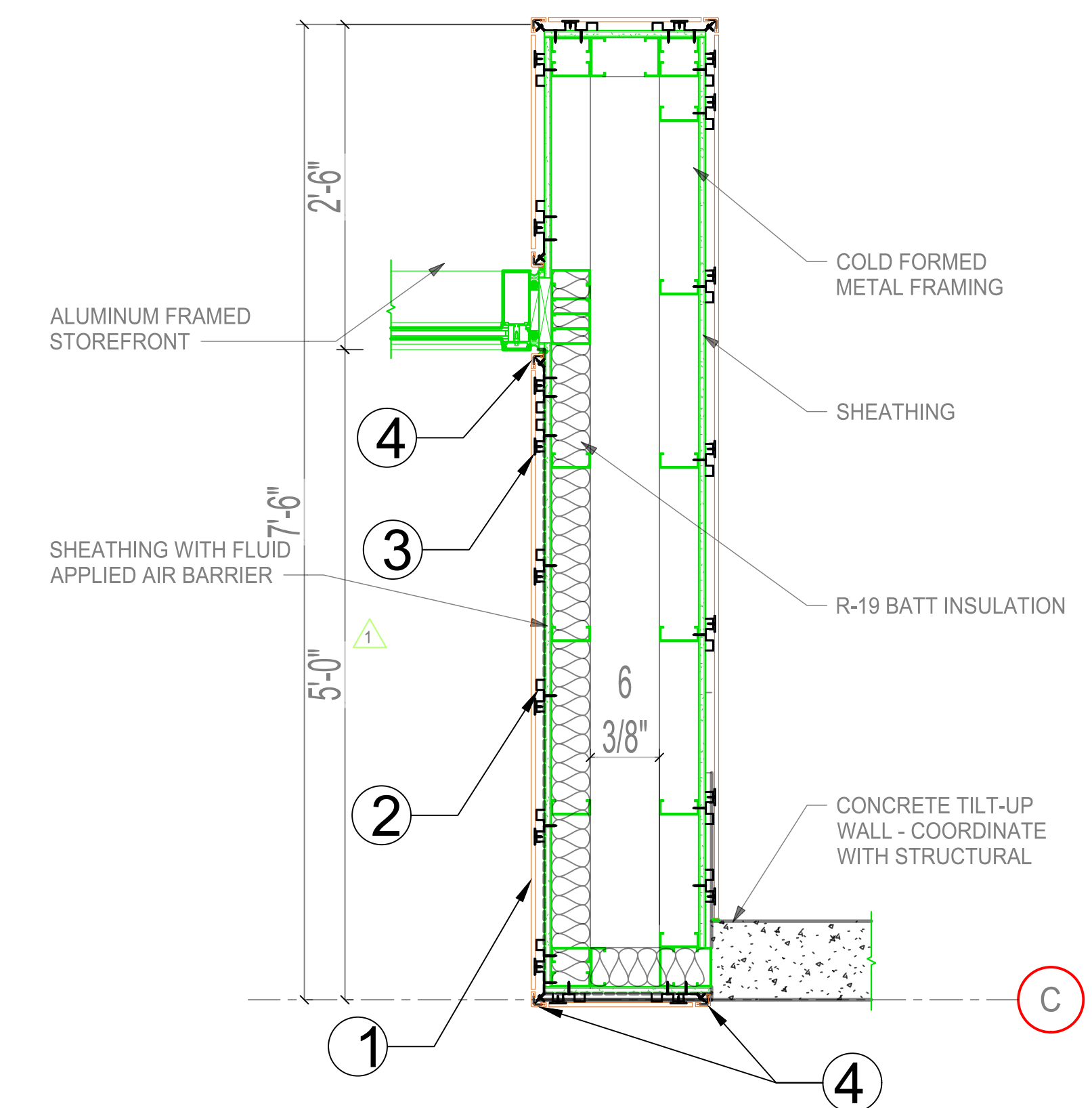
AS SHOWN SCALE A.01 SHEET 01

WOODN CLADDING COVERS THE INTERIOR WING WALL PORTIONS



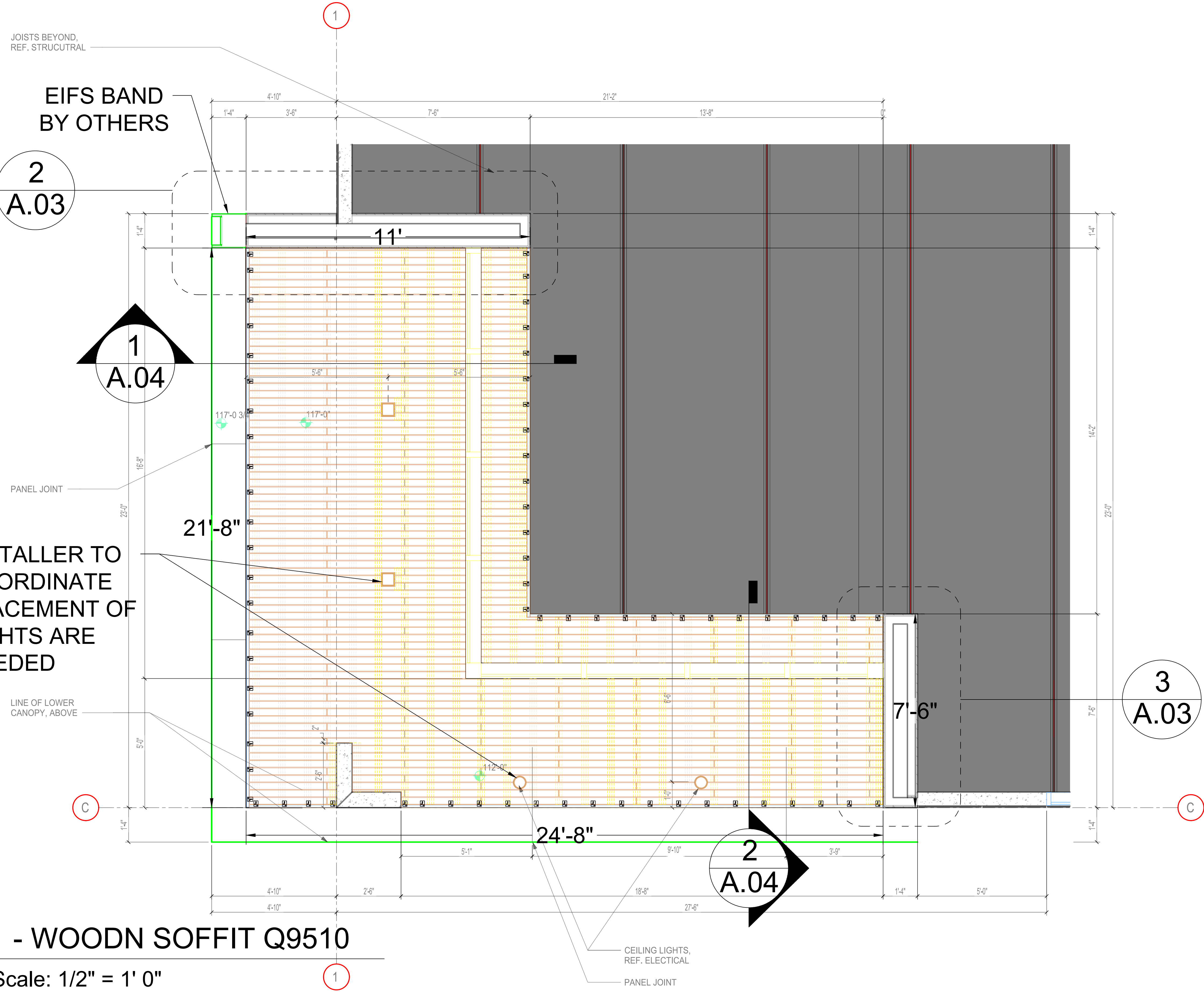
2 - SECTION DETAIL

Scale: 1" = 1' 0"



3 - SECTION DETAIL

Scale: 1" = 1' 0"



1 - WOODN SOFFIT Q9510

Scale: 1/2" = 1' 0"

A.03 - ENLARGED PLAN ENTRANCE (PLAN A2.81)



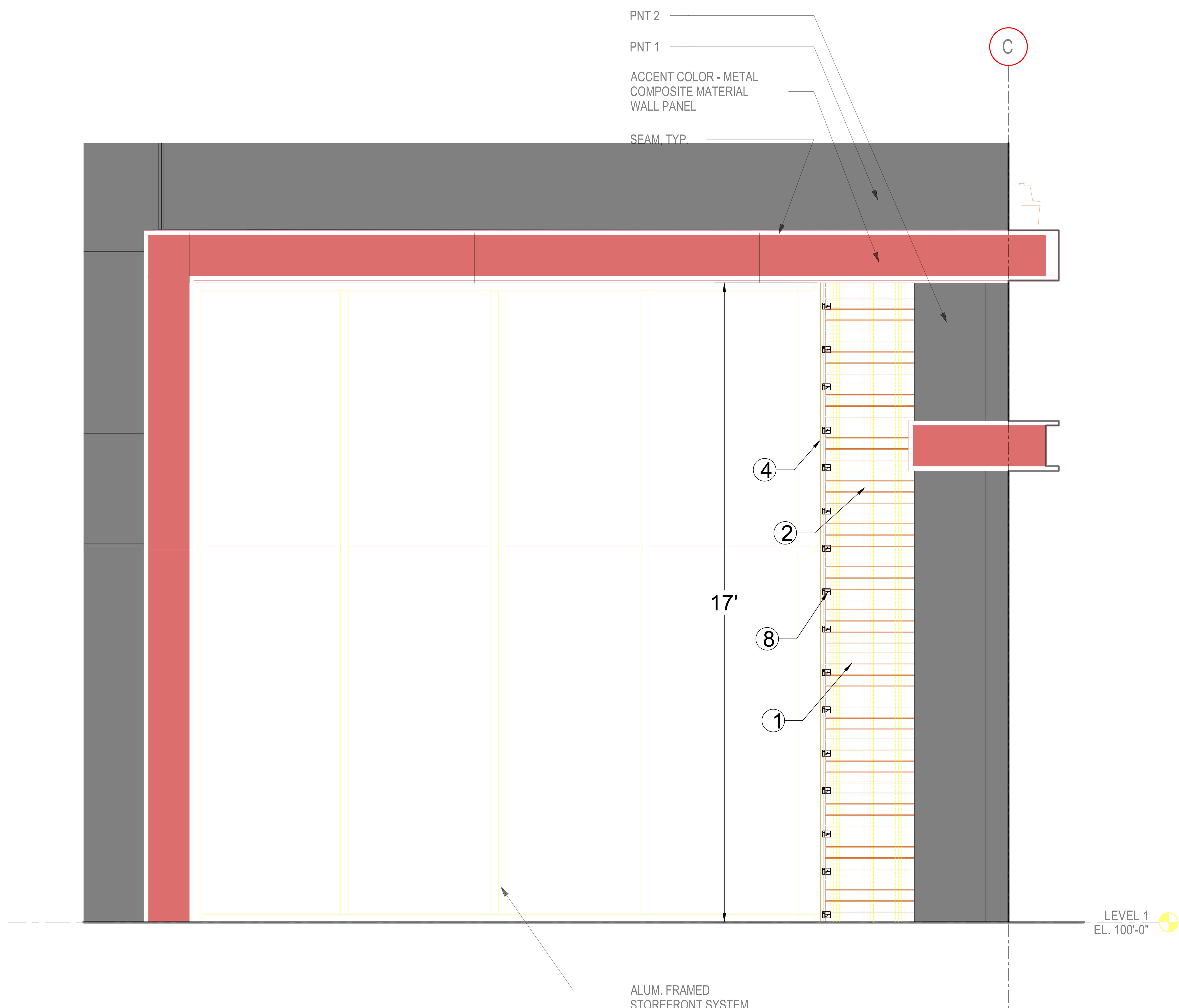
Formative Linear Systems
14310 SW 8 Street #1387
Miami, FL 33184
Office: 786.264.1044
www.buildfls.com

**Cladding Project
Texas**

Date:	Revision No:	Description:
04/14/2021	00	
04/15/2021	01	
04/16/2021	02	
05/19/2021	03	

Prepared By: GA

AS SHOWN SCALE A.03 SHEET 03



A.05 - NORTH ELEVATION (PLAN A4.11)

Scale: 3/4" = 1' 0"

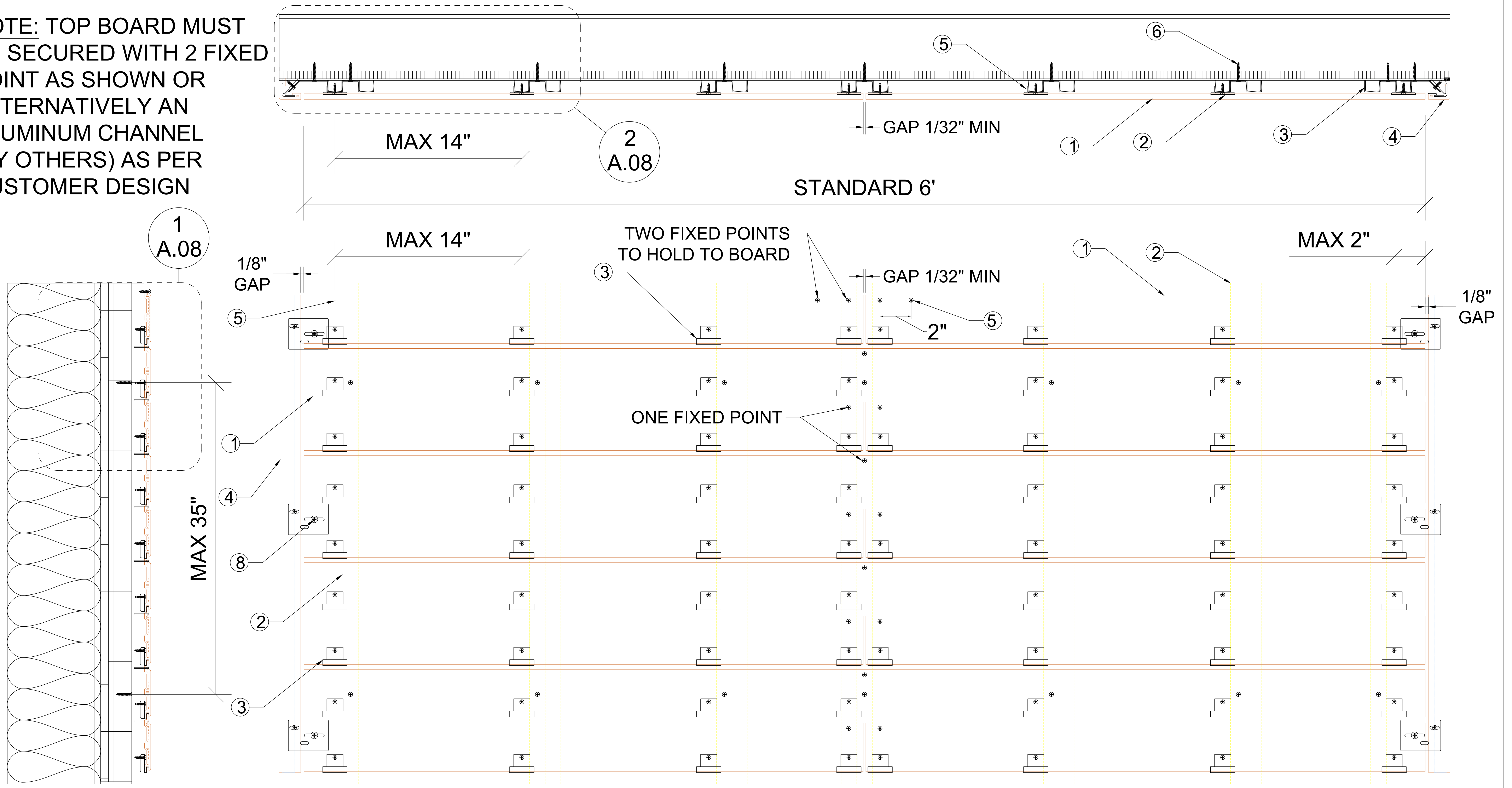
FLS
 DESIGN IN FORMATION
 Aesthetic Architectural Finishes
 Formative Linear Systems
 14310 SW 8 Street #1387
 Miami, FL 33184
 Office: 786.264.1044
 www.buildfls.com

**Cladding Project
 Texas**

Date:	Revision No:	Description:
04/14/2021	00	
04/15/2021	01	
04/16/2021	02	
05/19/2021	03	


Prepared By: GA	
AS SHOWN	A.05
SCALE	SHEET 05

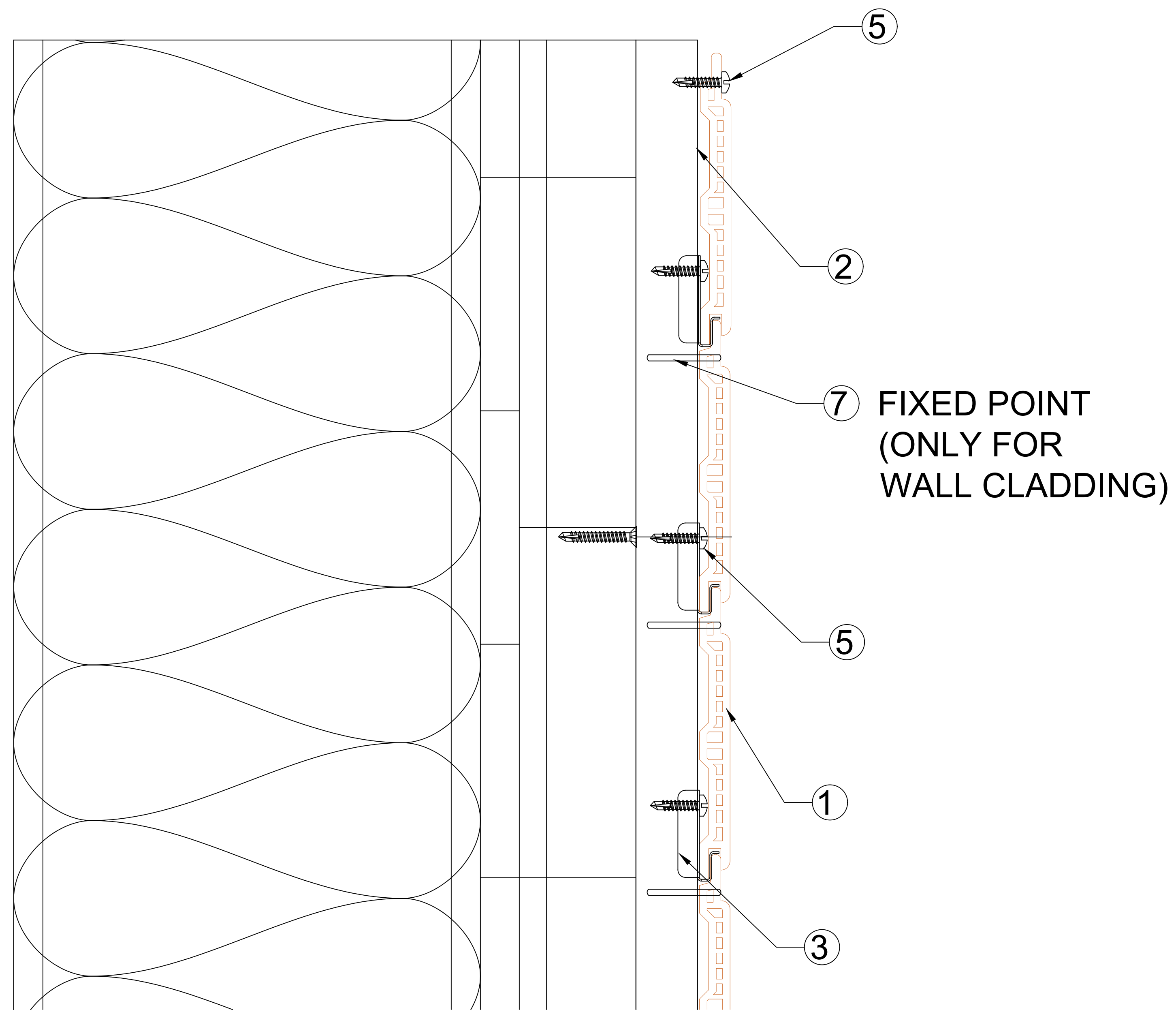
NOTE: TOP BOARD MUST BE SECURED WITH 2 FIXED POINT AS SHOWN OR ALTERNATIVELY AN ALUMINUM CHANNEL (BY OTHERS) AS PER CUSTOMER DESIGN



A.07 - WOODN CLADDING SYSTEM Q9510HD - TYPICAL INSTALLATION

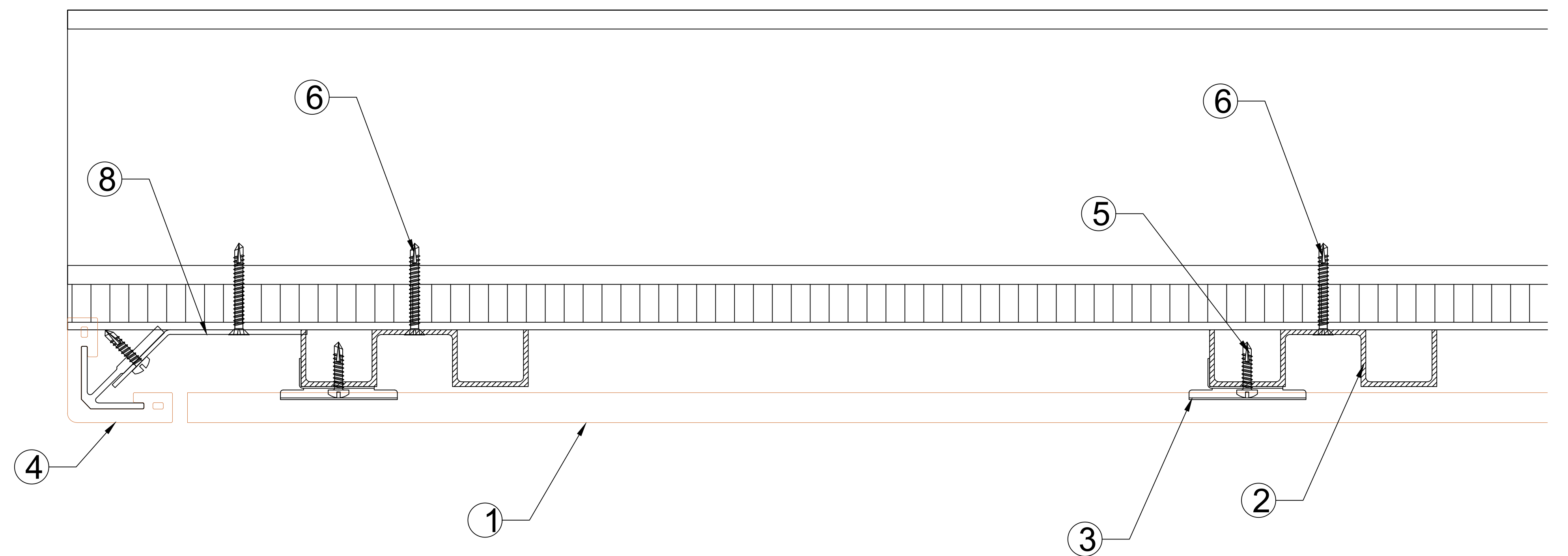
Scale: Not to Scale

 <p>Formative Linear Systems 14310 SW 8 Street #1387 Miami, FL 33184 Office: 786.264.1044 www.buildfls.com</p>	<p>Cladding Project Texas</p>	Date:	Revision No:	Description:	<p>Prepared By: GA</p>
		04/14/2021	00		
		04/15/2021	01		
		04/16/2021	02		
		05/19/2021	03		
					<p>AS SHOWN A.07 SCALE SHEET 07</p>



1 - DETAIL INSTALLATION

Scale: 1' = 1' 0"



2 - DETAIL INSTALLATION

Scale: 1' = 1' 0"

A.08 - WOODN CLADDING SYSTEM Q9510HD - TYPICAL INSTALLATION



Formative Linear Systems
14310 SW 8 Street #1387
Miami, FL 33184
Office: 786.264.1044
www.buildfls.com

Cladding Project
Texas

Date:	Revision No:	Description:
04/14/2021	00	
04/15/2021	01	
04/16/2021	02	
05/19/2021	03	

Prepared By: GA

AS SHOWN SCALE A.08 SHEET 08